



C-Truc #5

Main Characteristics

Length Overall	225 ft	(68.6 m)
Beam	38 ft	(11.6 m)
Depth	13.5 ft	(4.11 m)
Operating Draft	11.5 ft	(3.51 m)
Light Draft	9 ft	(2.74 m)
Gross Tonnage	396	

Capacities

Deadweight	889 LT	(903.3 mt)
Cargo Deck Area	142 ft x 32 ft...4,554 ft ²	(43.3m x 9.75m..422m ²)
Cargo Deck Loading	540 lbs per ft ²	(2.64 mt per m ²)
Deck Cargo	537 LT	(545.62 mt)
Fuel Oil Cargo	65,681 gal	(248.63 m ³)
Fuel Oil Day Tank	7,200 gal	(27.25 m ³)
Lube oil	1,388 gal	(5.25 m ³)
Liquid Mud	1,550 bbls	(246.43 m ³)
Dry Bulk	4,500 ft ³	(127.43 m ³)
Potable Water	84,000 gal	(317.97 m ³)
Rig Water	82,656 gal	(312.89 m ³)

Performance

Top Speed Max Draft	12 knots
Top Speed Light Draft	14 knots
Fuel consumption at Operating Draft	
Max Speed	12 knots @ 140 gph
Crusing Speed	10 knots @ 110 gph

Propulsion

Main Engines	2 x 12-645-E
Manufacturer	EMD
Total Horsepower	4,480 BHP
Main Propulsion	2 x Reintjes 3.44:1 gears with NIBRAL Wheels
Rudders	2 x Becker High-Lift Rudders
Bow Tunnel Thruster	1 x HP Schottel - Controllable Pitch
Driven By	1 x 750 HP Cummins K 19

Dynamic Positioning System**EMI - DP 1**

2 Fully Independent USCG Approved DP Systems
2 each Starlink Invicta 210 DGPS Receivers
2 Raytheon Gyrostar II Gyros
2 Young Anemometers
1 MRU pitch and roll sensor
1 Independent backup joystick unit

Cargo Discharge

Fuel Oil	400 gpm @200ft (90.9m ³ /h @ 60.9m)
Rig Fresh Water	400 gpm @200ft (90.9m ³ /h @ 60.9m)
Liquid Mud (LM)	1800 gpm @ 150ft (409 m ³ /h @ 45.7m)
Bulk Material (BM)	6 x 750 ft ³ tanks

Accomodations

Accomodations for 18 people composed of:

3 x 2 man cabins
3 x 4 man cabins
Certified to carry 38 persons
Walk in Refrigerator & Freezer
Fully Airconditioned and Heated

Electronics

3 x VHF Radio
1 x Radio System Compliant with GMDSS A3 Rules
1 x Navigation Gyro Compass
2 x Radars with ARPA
1 x PA / Loud Hailer
1 x EPIRB

Generators

Engine MFG	GM 6-71 Detroit Diesel
Volts Each	230
K.W.	99
Generator MFG	Delco

Life Saving Equipment / Fire Monitor

2 x 10 Man Life Rafts	
Other gear as required by USCG	
1 8x6 Fire Monitor	450ft @ 2600 GPM
	(137.5m @ 24,800 m ³ /h)

Registration

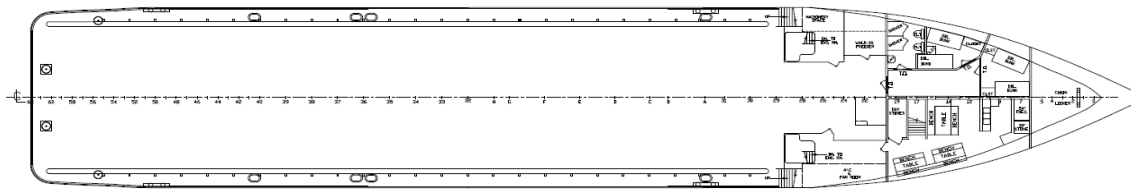
Type	Platform Supply Vessel
Owner/Operator	L&M Botruc Rental, Inc.
USCG Official #	558074
Year Built	1973
Builder	Southern Boat Builders
Refurbished w/ DP	2009
By	Bollinger Shipyards, Inc
Home Port	New Orleans, LA
Flag	U.S.A.
Classification	Subchapter L OSV
	ABS Loadline

18692 West Main Street Galliano, LA 70354 Phone (985) 475-5733 FAX (985)475-5669
www.botruc.com

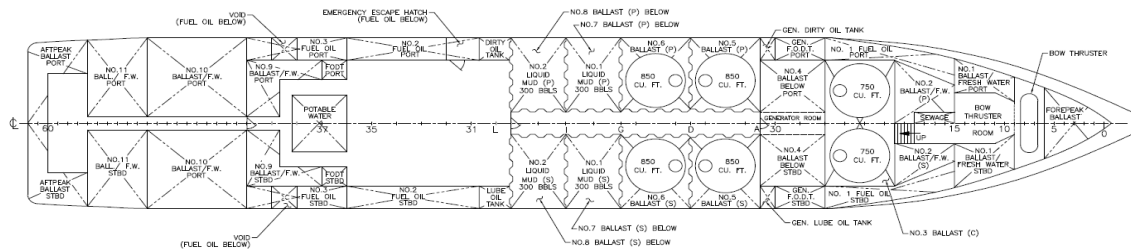
Notice: The Data contained herein is provided to allow users to determine the suitability of the subject equipment. Data may vary from the current condition of equipment which can only be determined by physical inspection. Company has exercised due diligence to ensure that the data contained herein is reasonably accurate. However, Company does not warrant the accuracy or completeness of the data. In no event shall Company be liable for any damages whatsoever arising out of the use of the data contained herein.

C-TRUC No. 5

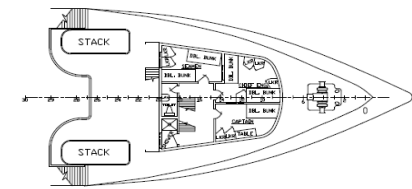
Offshore Supply Vessel



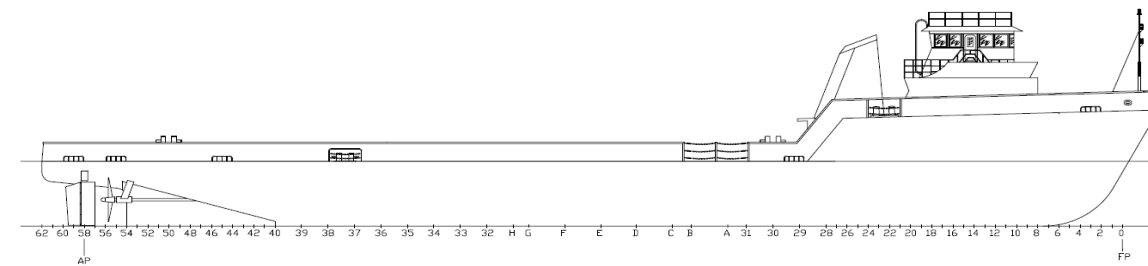
MAIN DECK



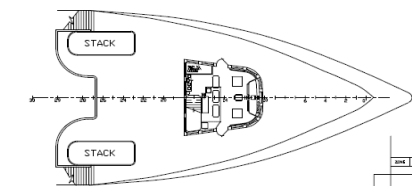
HOLD PLAN



FOCS'L DECK



M/V C-TRUC # 5
PROFILE



PILOT HOUSE

